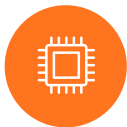


Centerm Chromebook M613A

Fast, reliable, designed for Education



INTEL N150



8G LPDDR5



32G eMMC



**WIFI 6 /
Bluetooth 5.2 /
4G LTE**



Tailored for educational scenarios, Centerm Chromebook M613A is an 11.6" laptop equipped with an Intel N150 processor, plus fast charging and an eco-friendly design.

**Visit Official
Website**

www.centermclient.com



zhengx@centerm.com





Seamless Performance

Intel N150 with ChromeOS for smooth study apps



Clear Visual

11.6" HD screen for studying & collaboration



Interactive Learning

Rotatable camera & HD audio for online classes



Always Connected

WiFi 6, Bluetooth 5.2 & 4G LTE



Centralized Management

Easy device setup, updates & classroom control



All-Day Learning

6000mAh battery supports full school day

Specification

Processor	Intel N150
Chipset	Twin Lake integrated with CPU
Operating System	ChromeOS
Memory	8G LPDDR5
Storage	32G eMMC
Communication	Wifi 6,Bluetooth 5.2, 4G LTE
Ports	1 USB 3.0 Gen 1 1 Type-C Gen 1 with PD function
Camera	1-megapixel camera integrated with LED indicator, rotational camera
Display	11.6 inch screen, 1366*768, 16:9/HD
Audio	HD Audio with Wave RT supported Single digital microphone with integrated camera 2.0W x 2ch (over 5cc)
Card Reader	2 in 1 card reader (uSDsocket , SD/MMC, push-push type)
Dimension	290.36*198.64mm*20.3mm
Weight	1.29kg
Battery	6000mAh 2 cells battery pack (47.3Wh,2S1P , polymer)